



UNIVERSITY OF  
CAMBRIDGE

# **From behind the keyboard to behind bars: Cybercrime arrests and prosecutions in the UK**

Dr Alice Hutchings

Computer Laboratory, University of Cambridge

Presentation for the Inaugural Cybercrime  
Conference, 14 July 2016

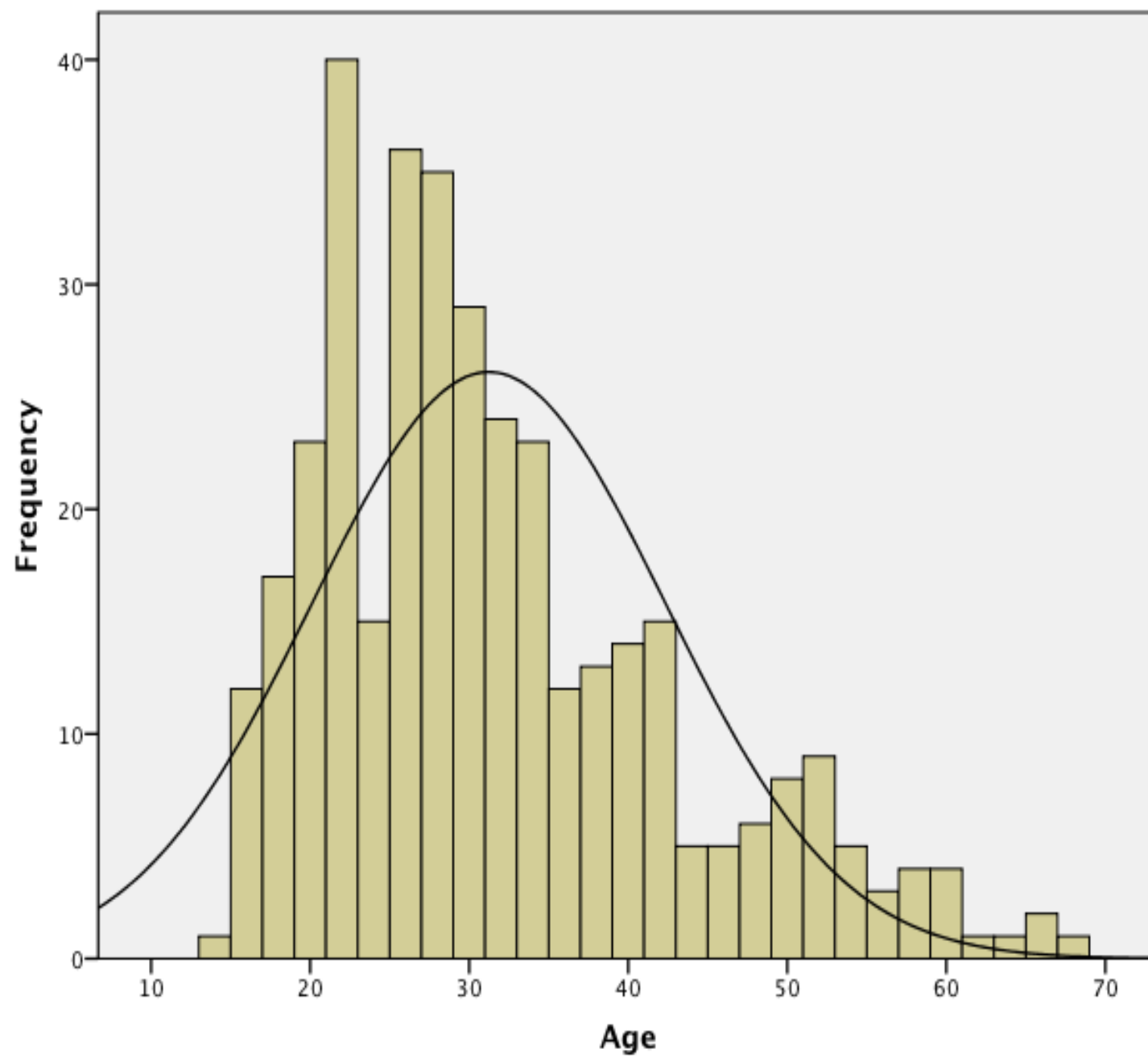
# Cambridge Computer Crime Database

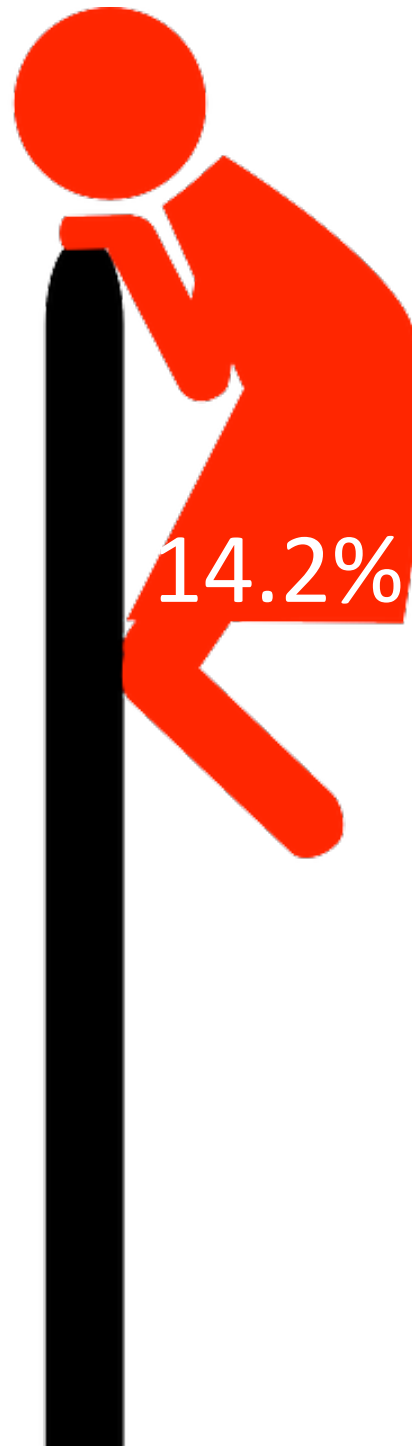
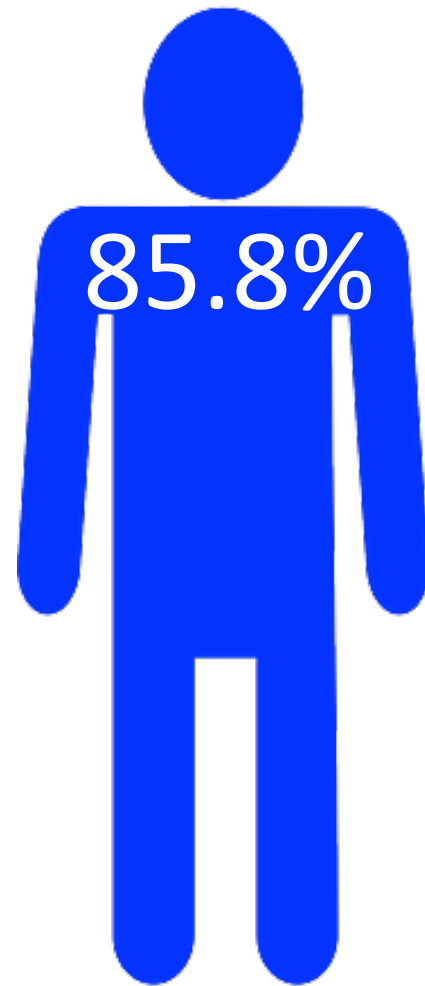
[www.cl.cam.ac.uk/~ah793/cccd](http://www.cl.cam.ac.uk/~ah793/cccd)

Open source information about arrests and  
prosecutions in the UK

# Cambridge Computer Crime Database

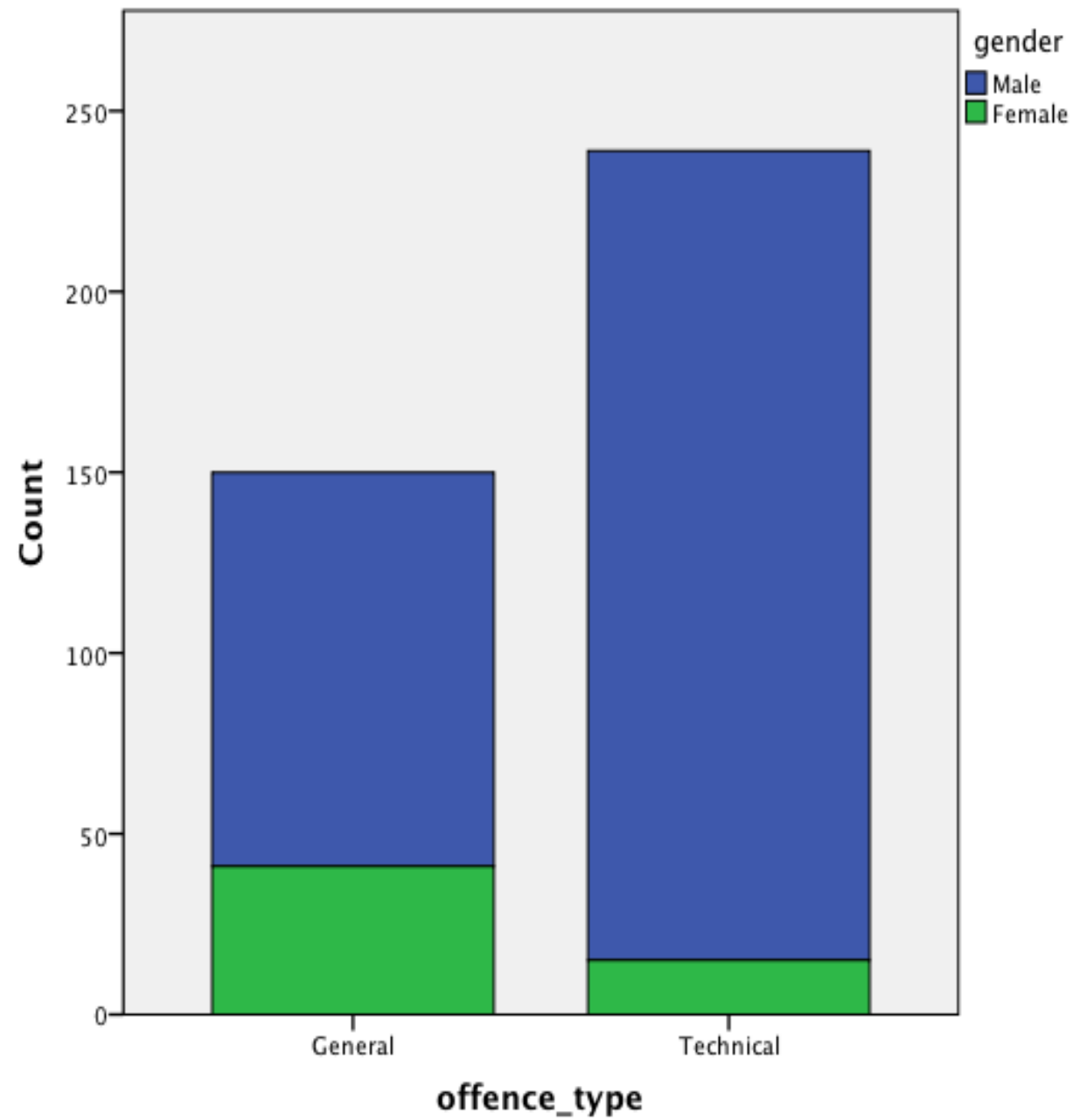
- 456 entries 1 January 2010 to 30 June 2016
- 286 finalised
- 154 unfinalised
- 16 dropped or acquitted (removed for this analysis)



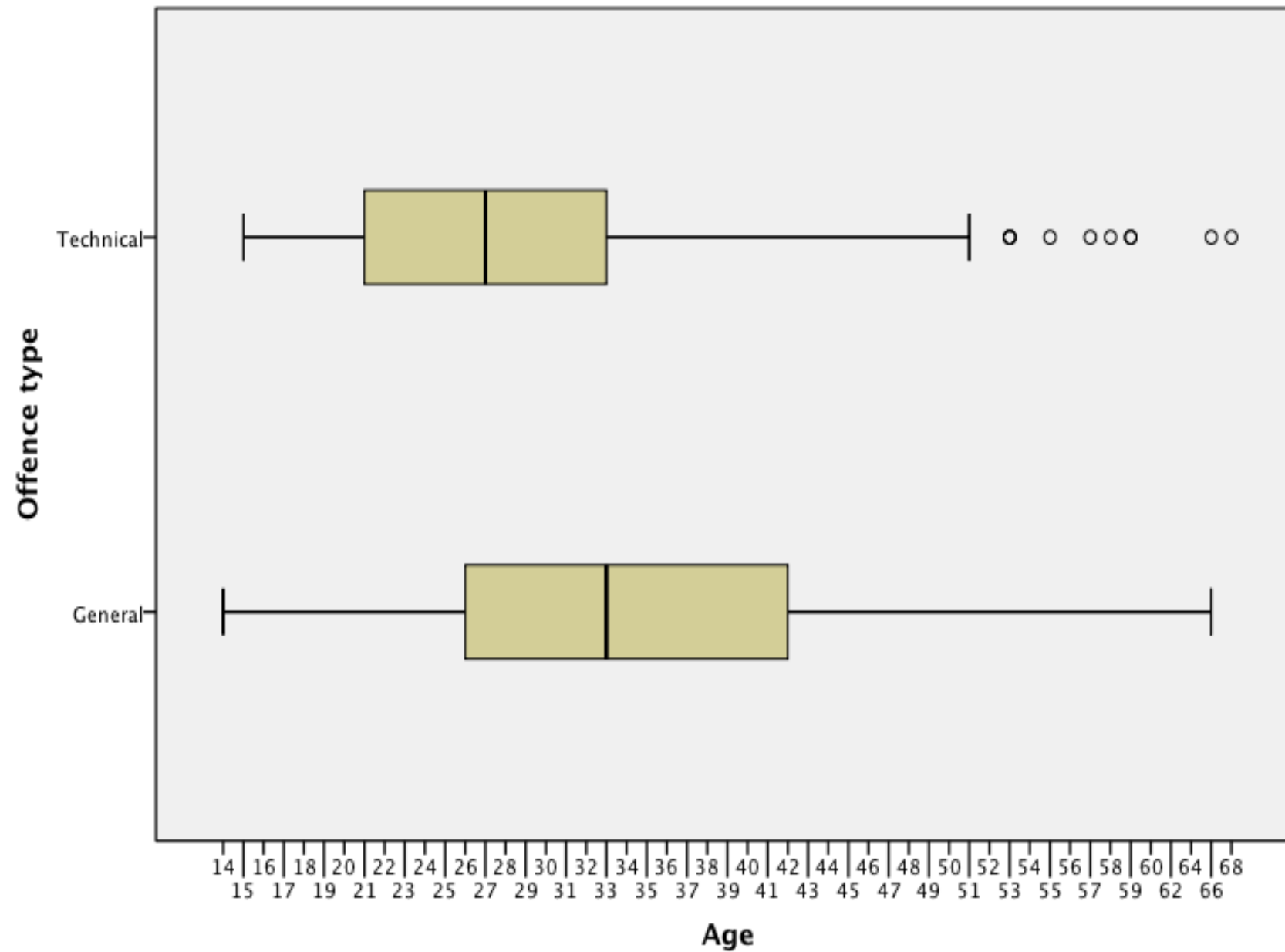


# Offence categorisation





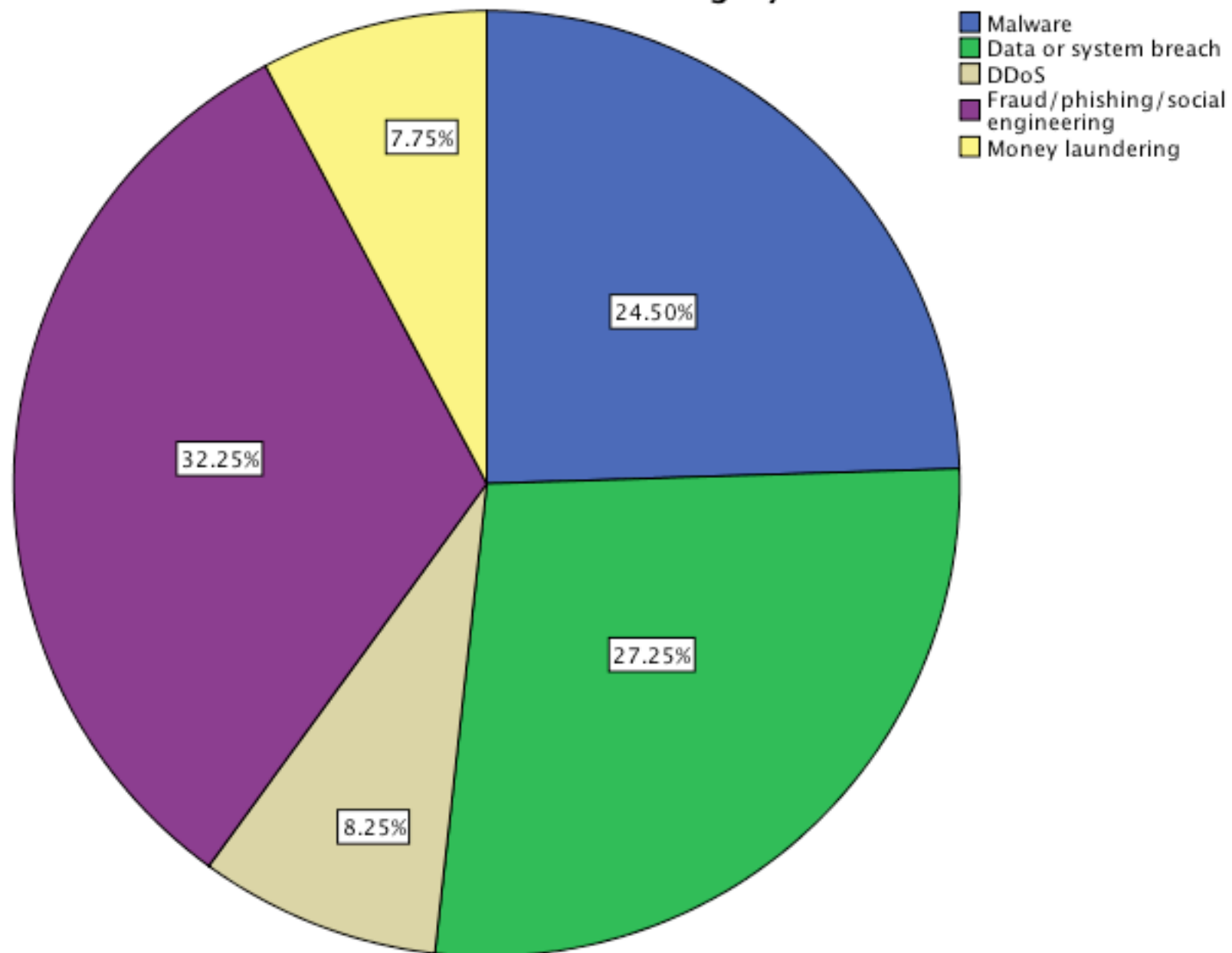
$X^2(1, N=389)=31.473, p < .001$

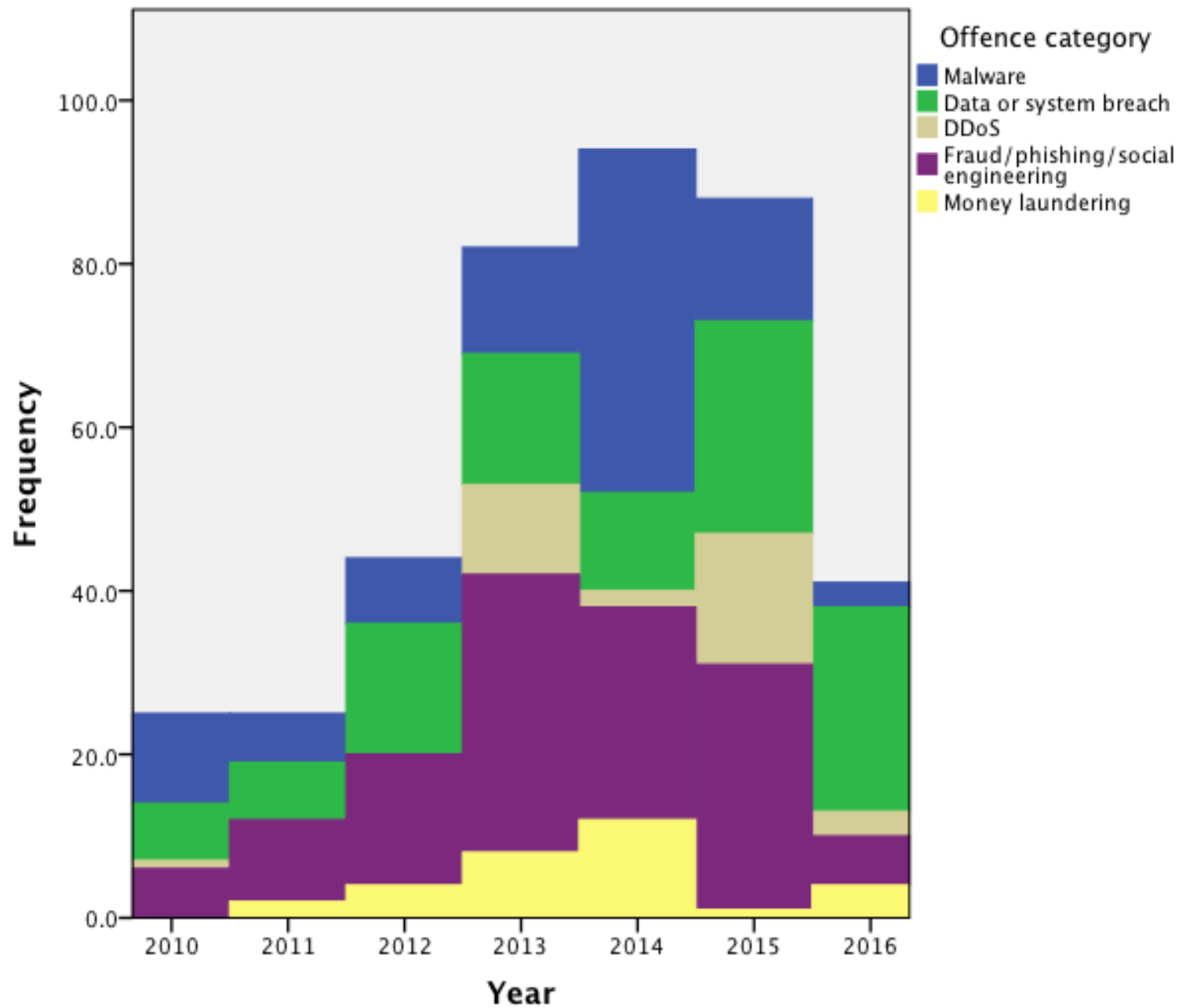


$U = 9294.50, p < .001$

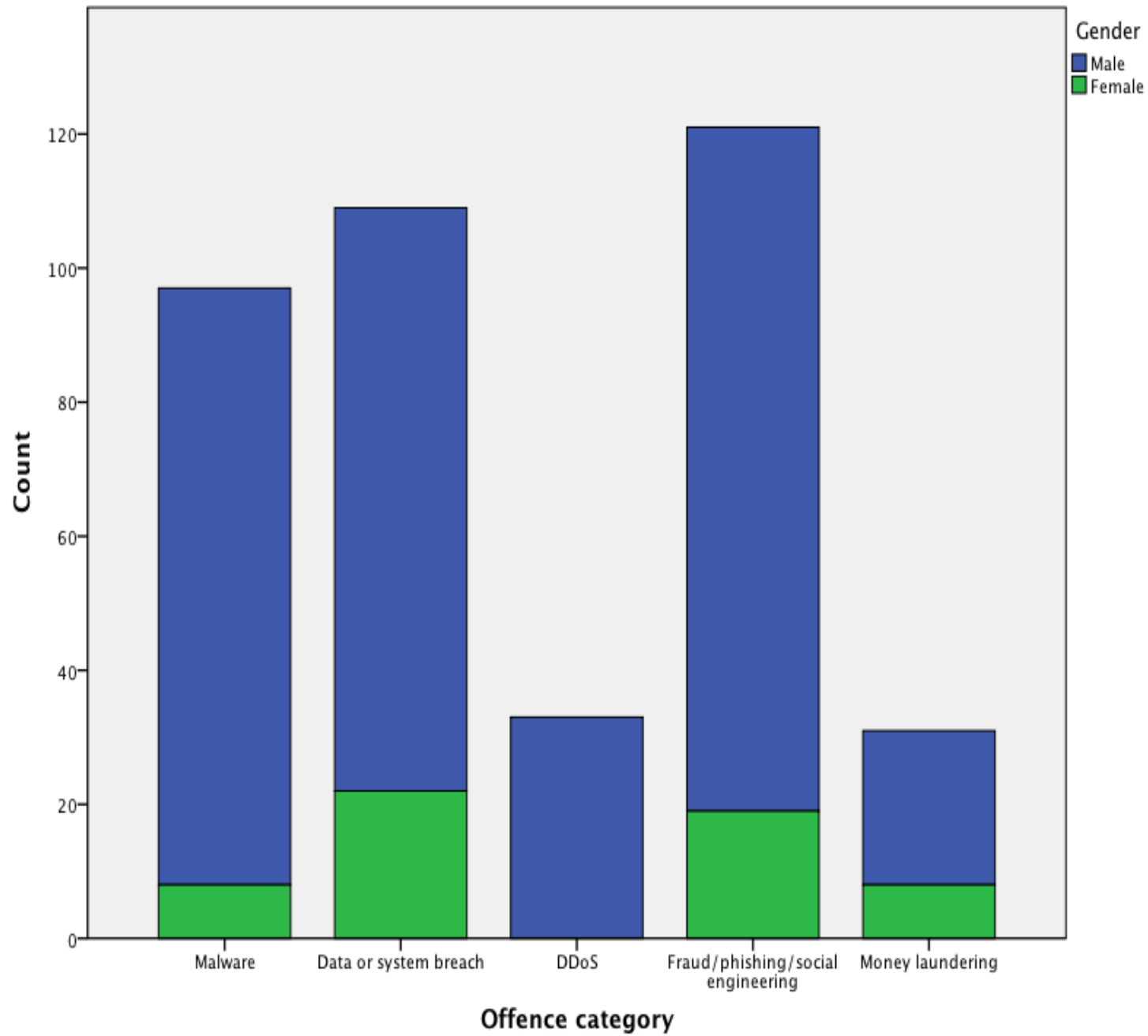


Offence category

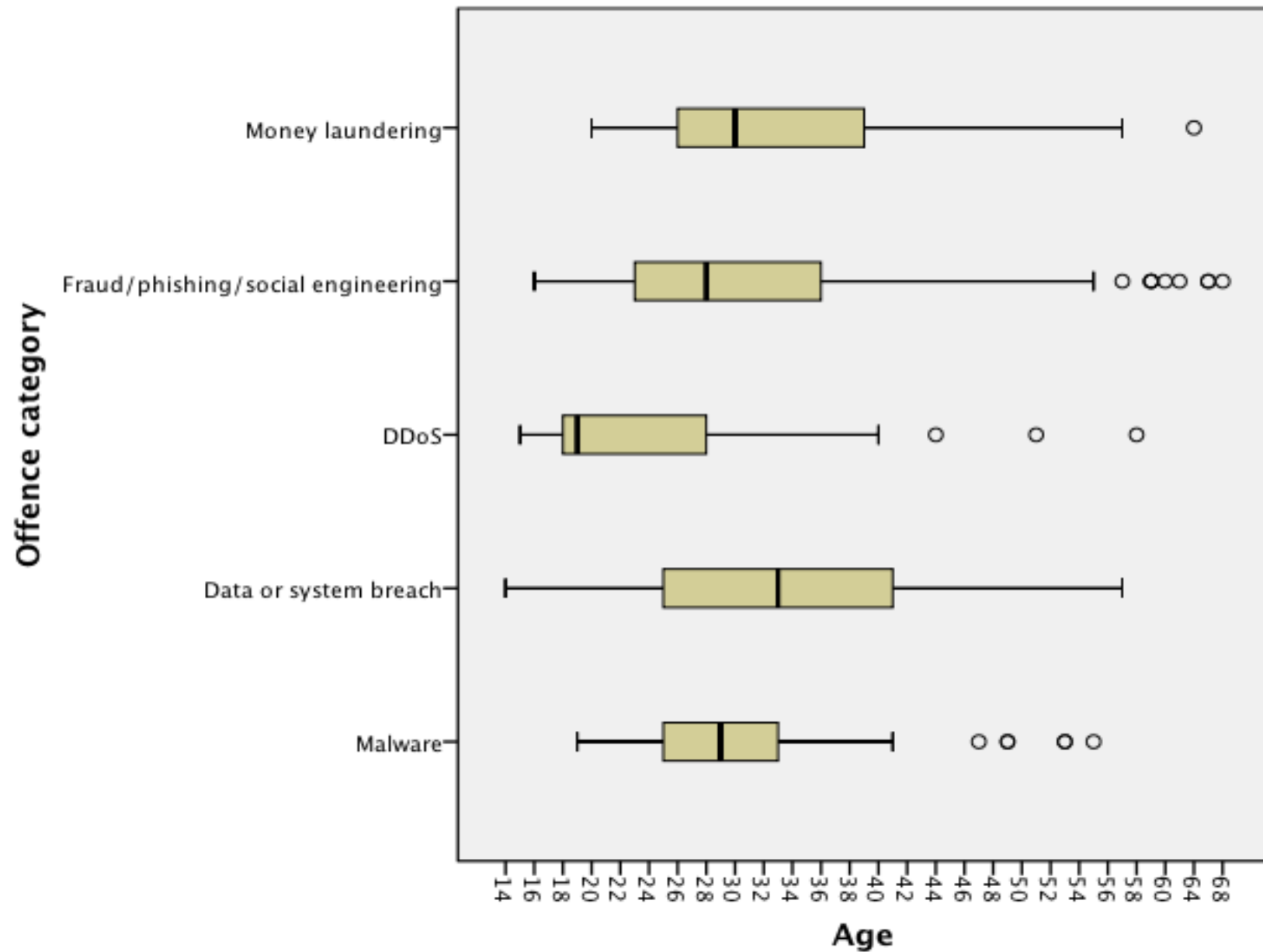




$\chi^2(20, N=358)=69.926, p < .001$



$X^2(4, N=391)=14.765, p < .01$



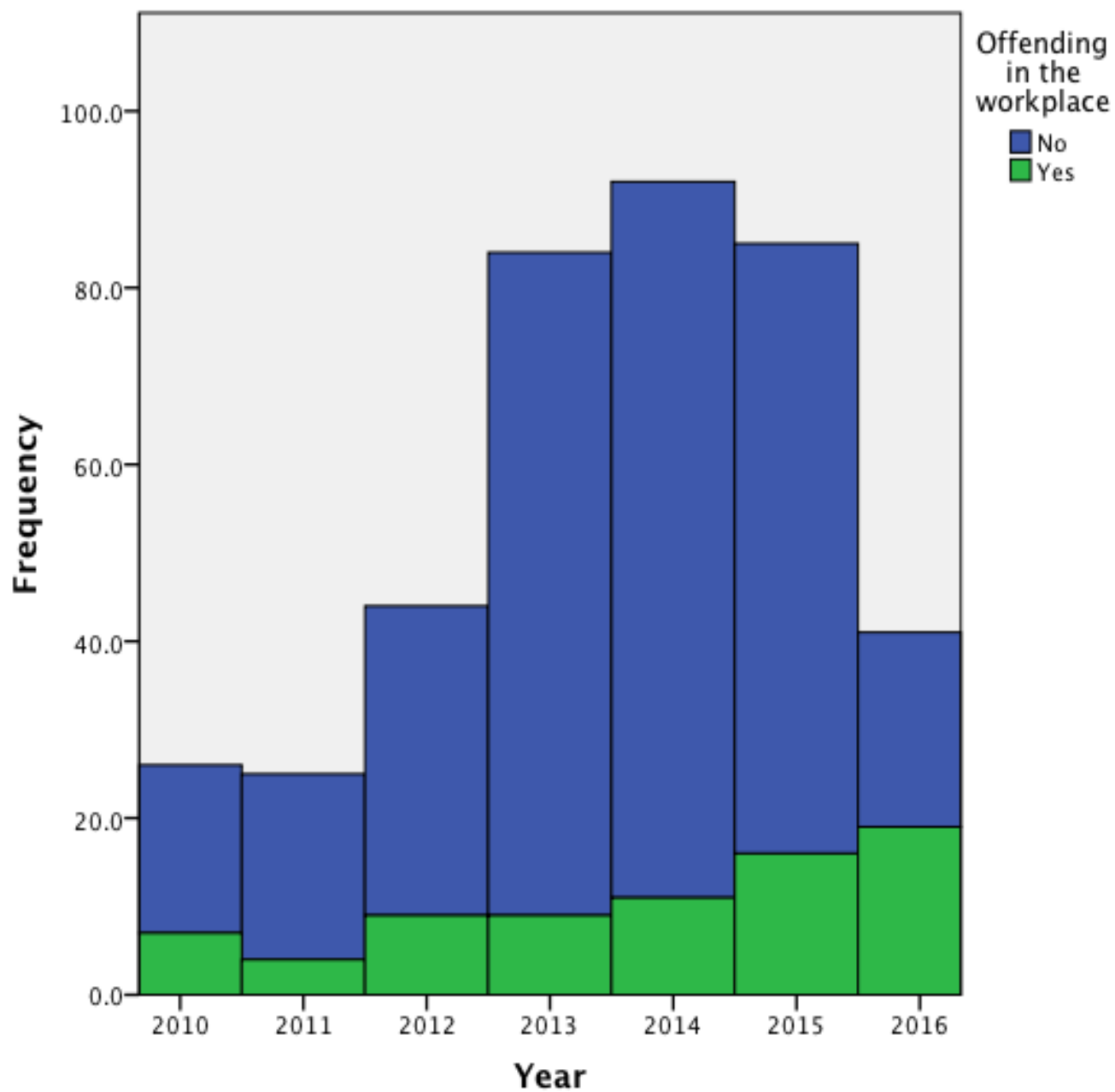
$$X^2(4, N=350) = 25.588, p < .001$$



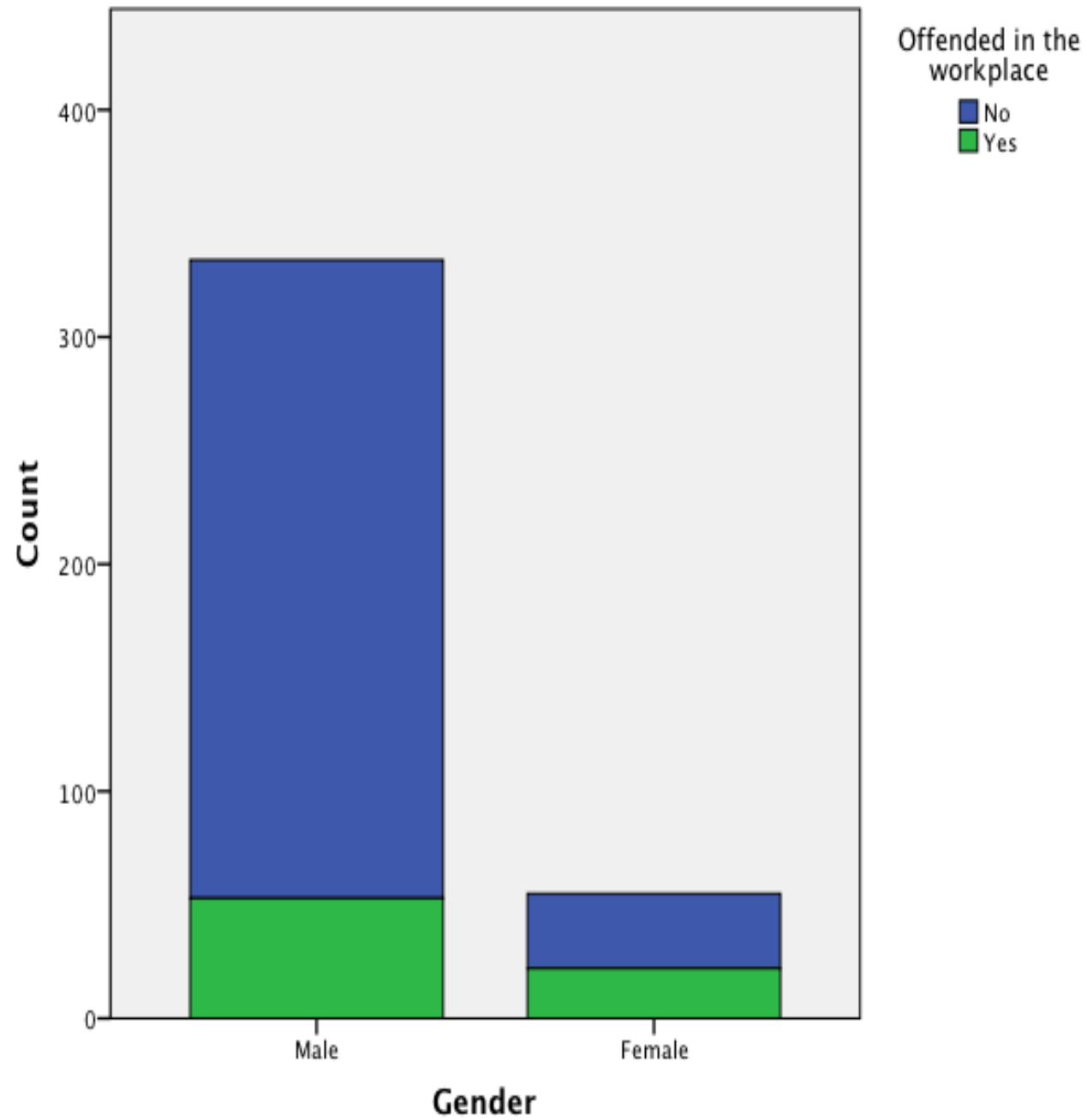
18.8%  
during or after  
course of  
employment

81.2%  
not related to  
the workplace

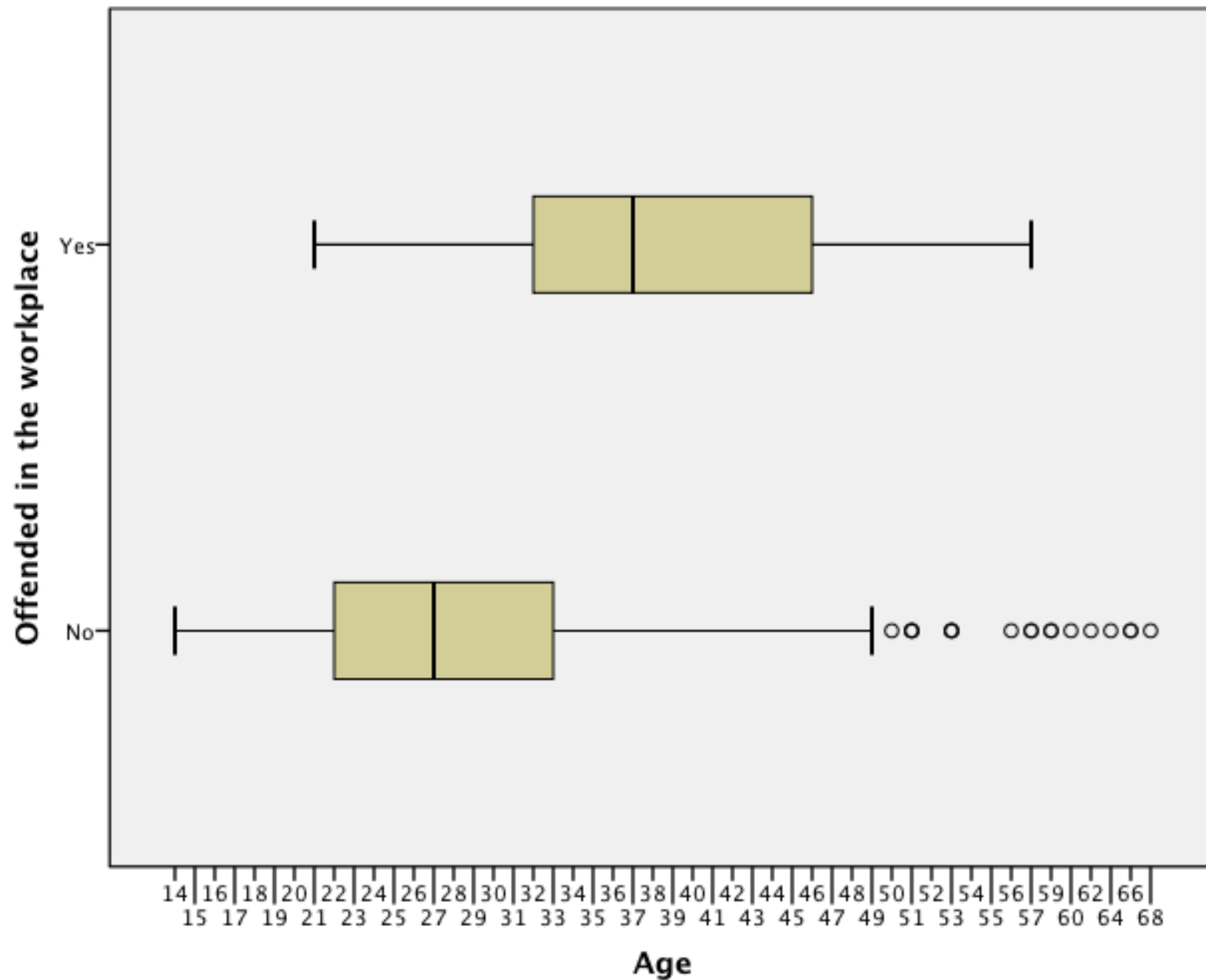




$\chi^2(6, N=397)=28.017, p < .001$



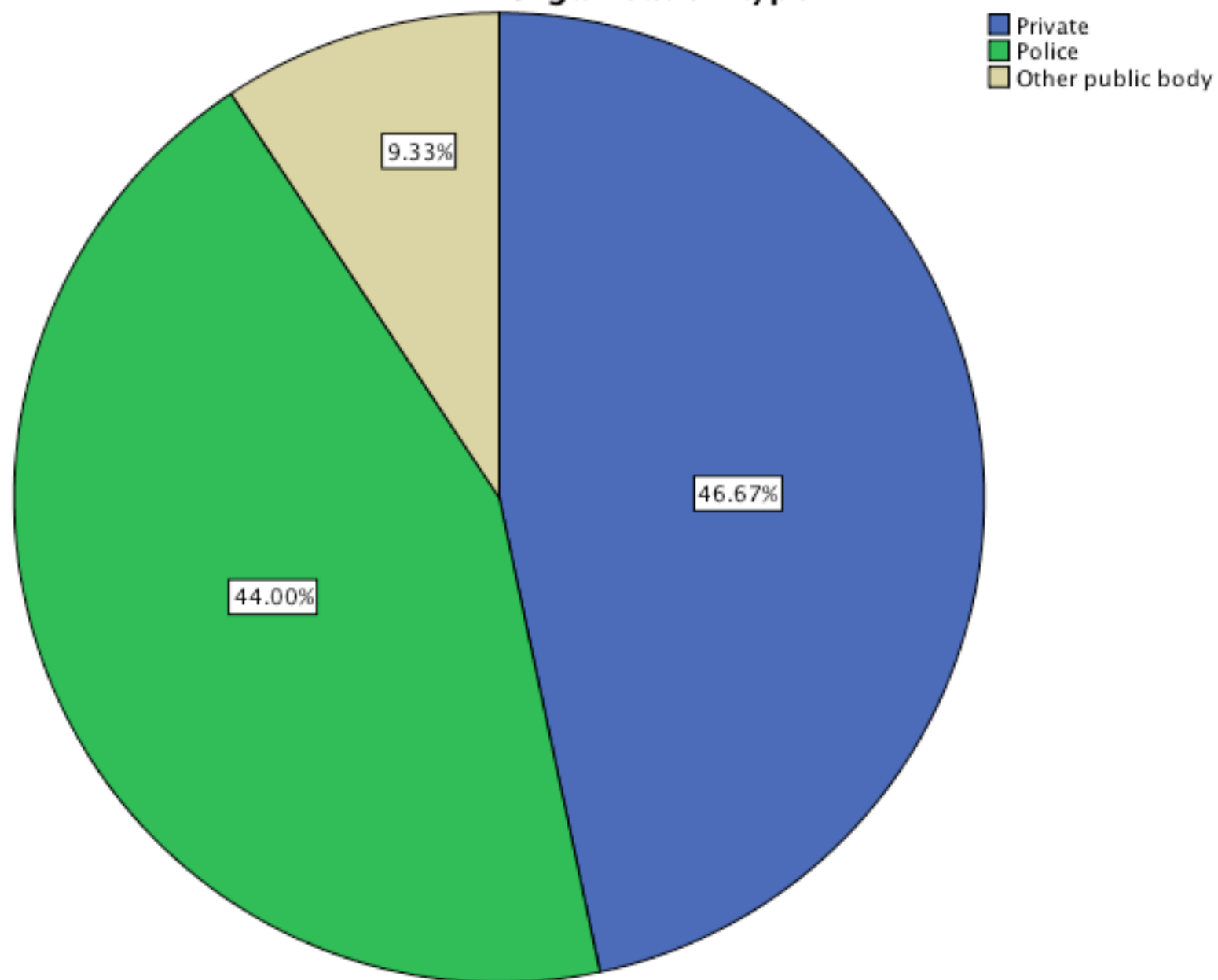
$\chi^2(1, N=389)=16.154, p < .001$



$U = 4604.00, p < .001$



Organisation type



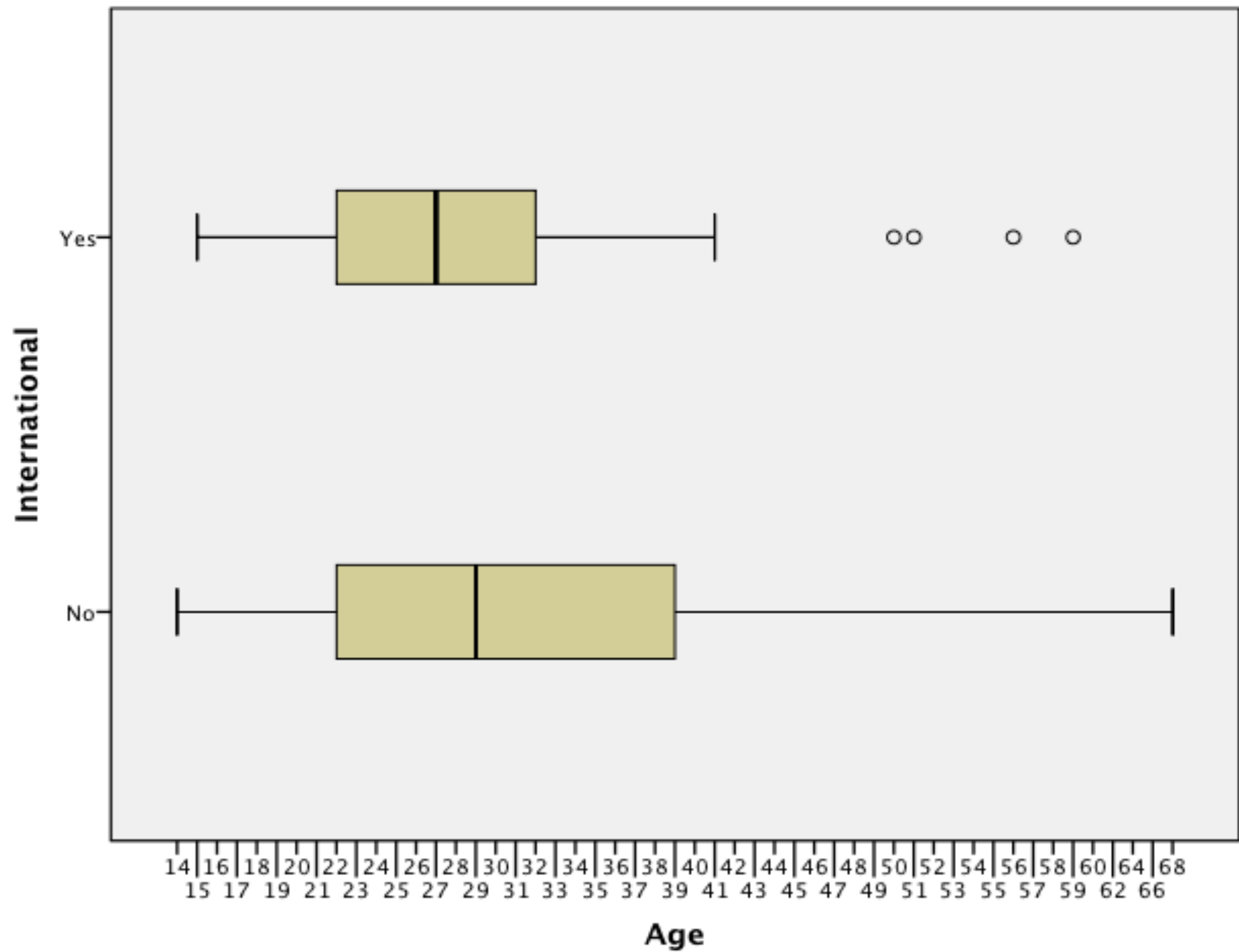


82.5%

no international aspect



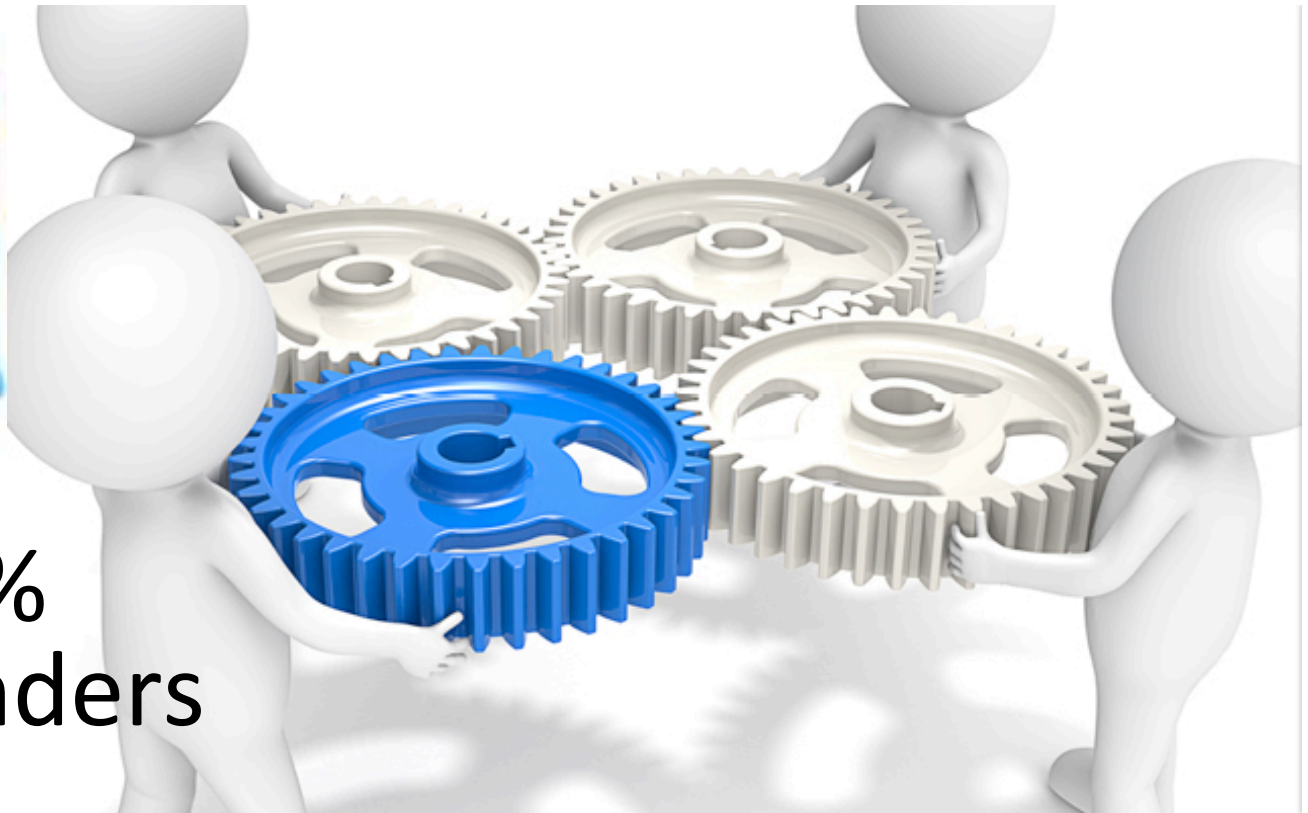
17.5% international aspect

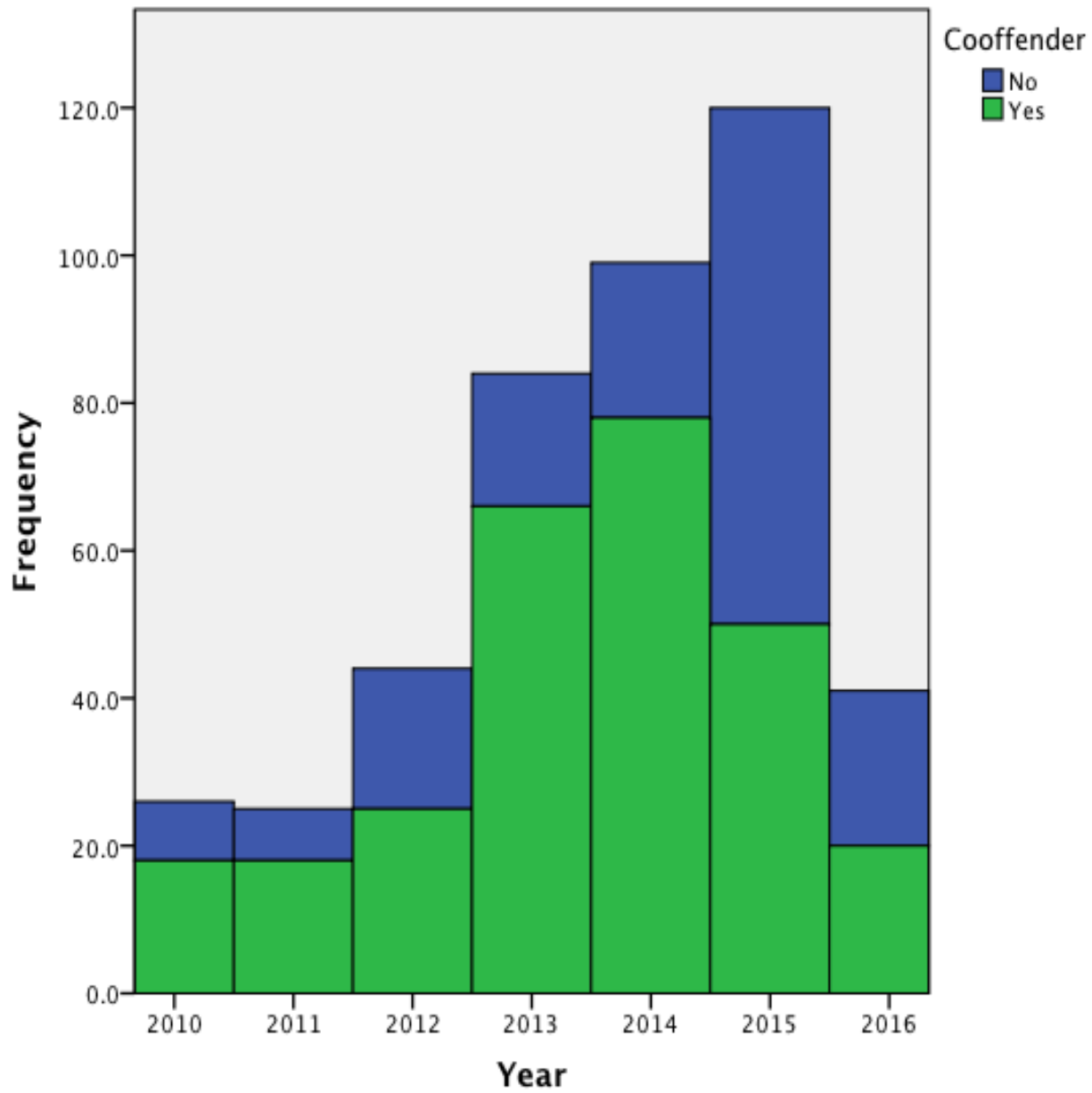


37.5%  
sole offenders

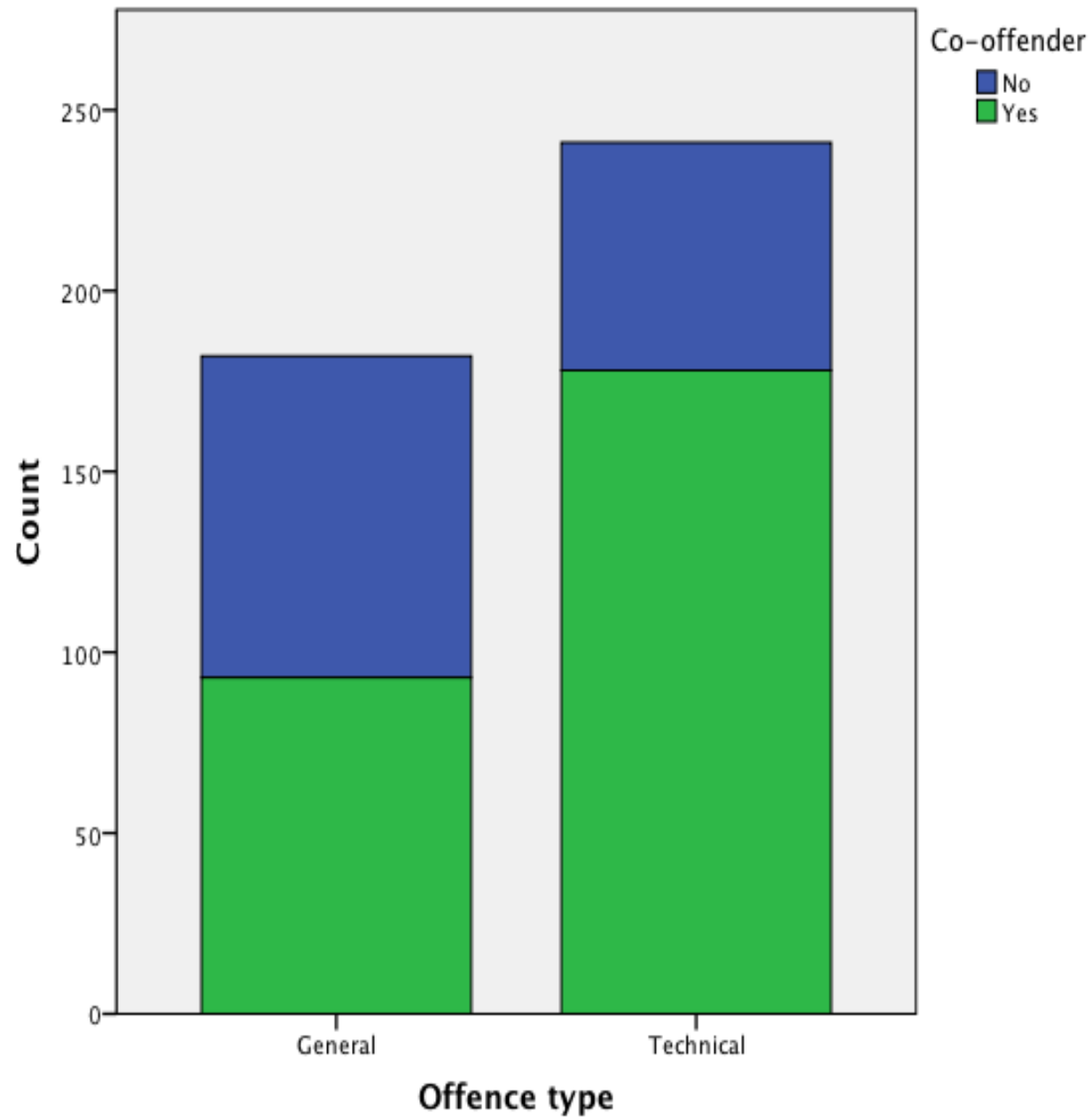


62.5%  
co-offenders

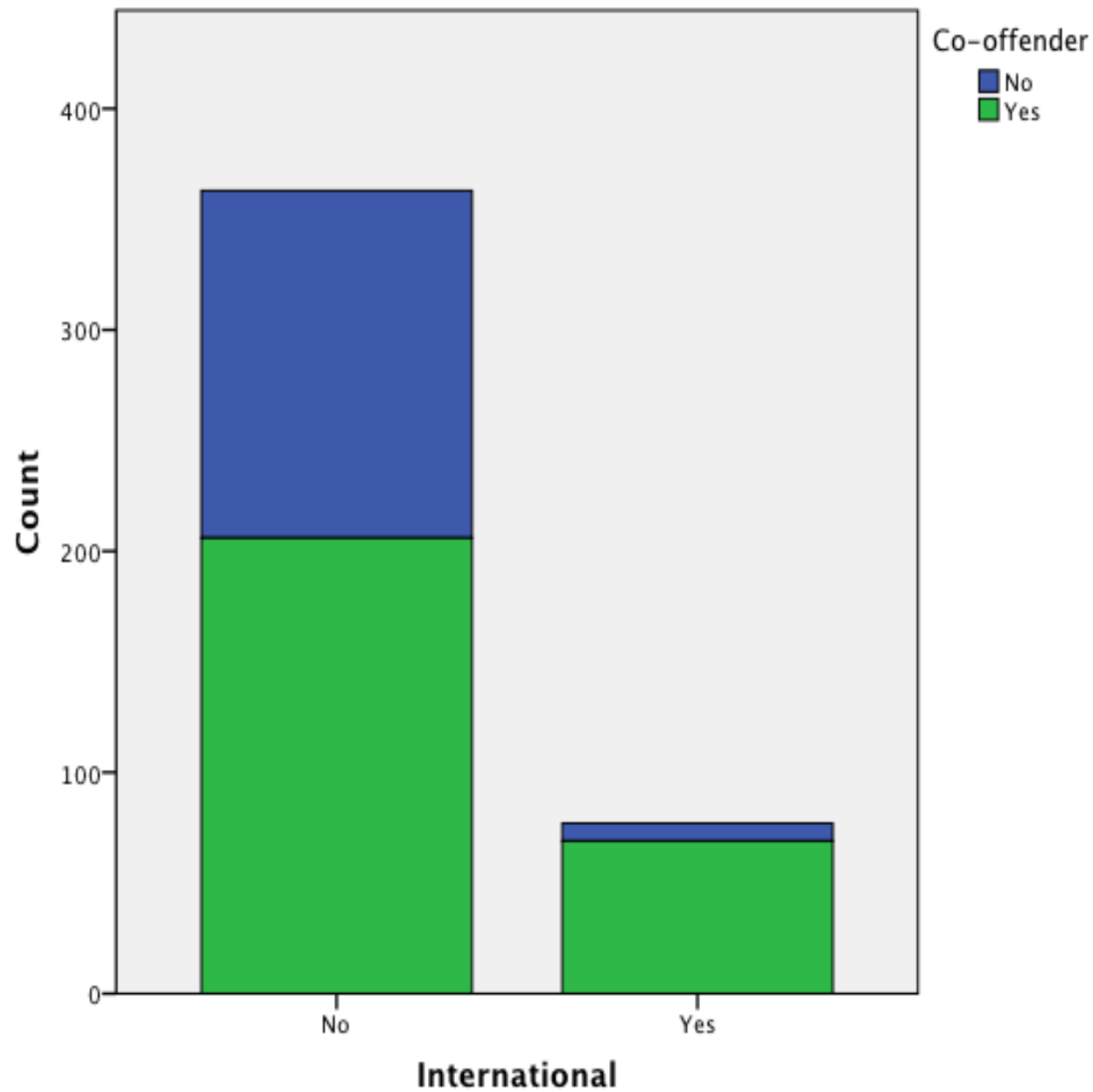




$$X^2(6, N=439)=48.119, p < .001$$

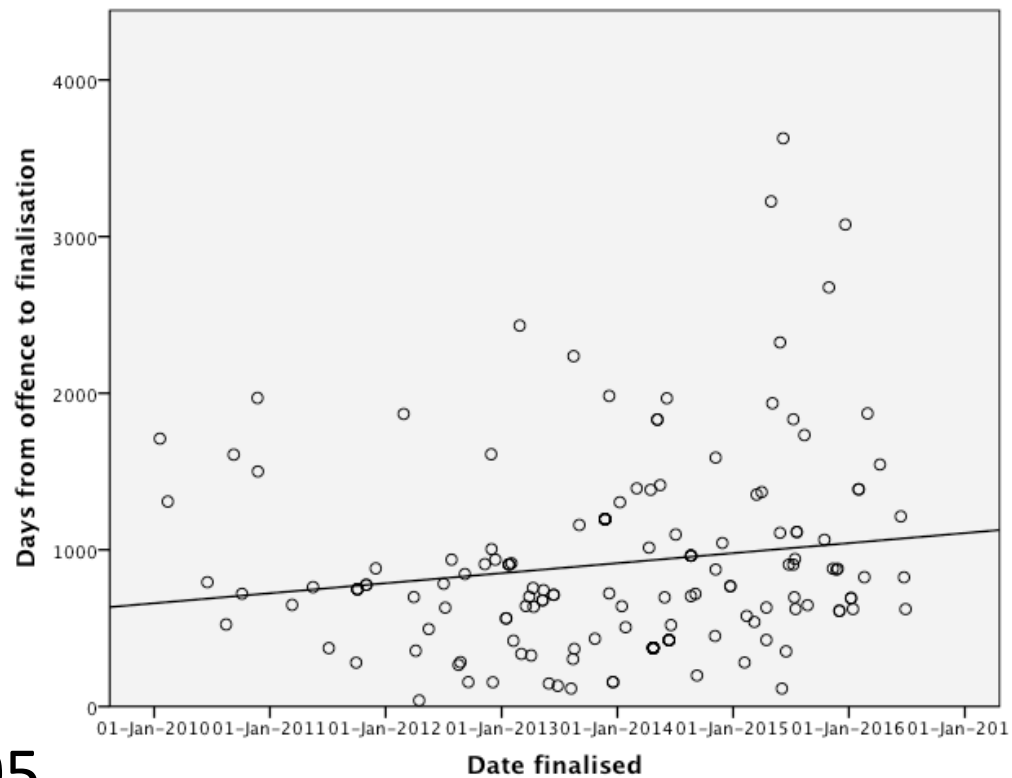
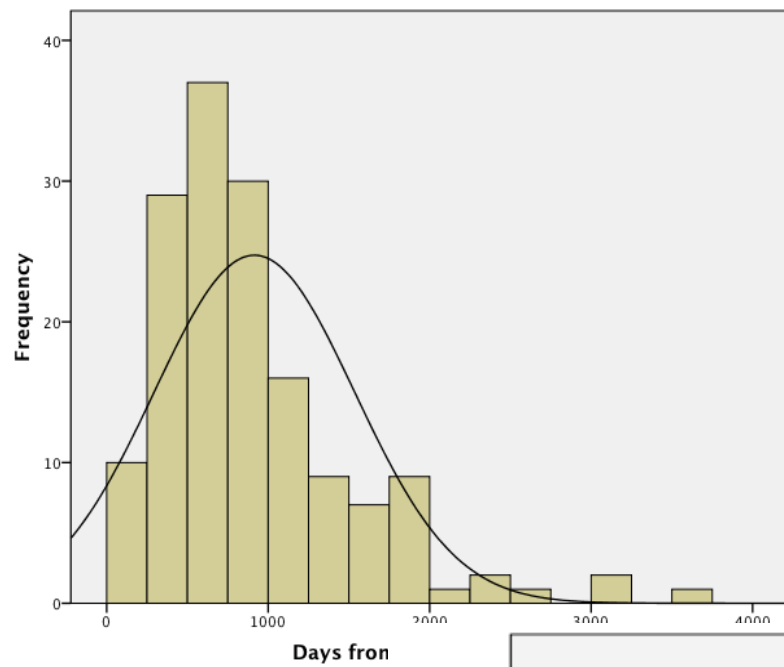


$\chi^2(1, N=423)=22.354, p < .001$



$\chi^2(1, N=440)=27.883, p < .001$

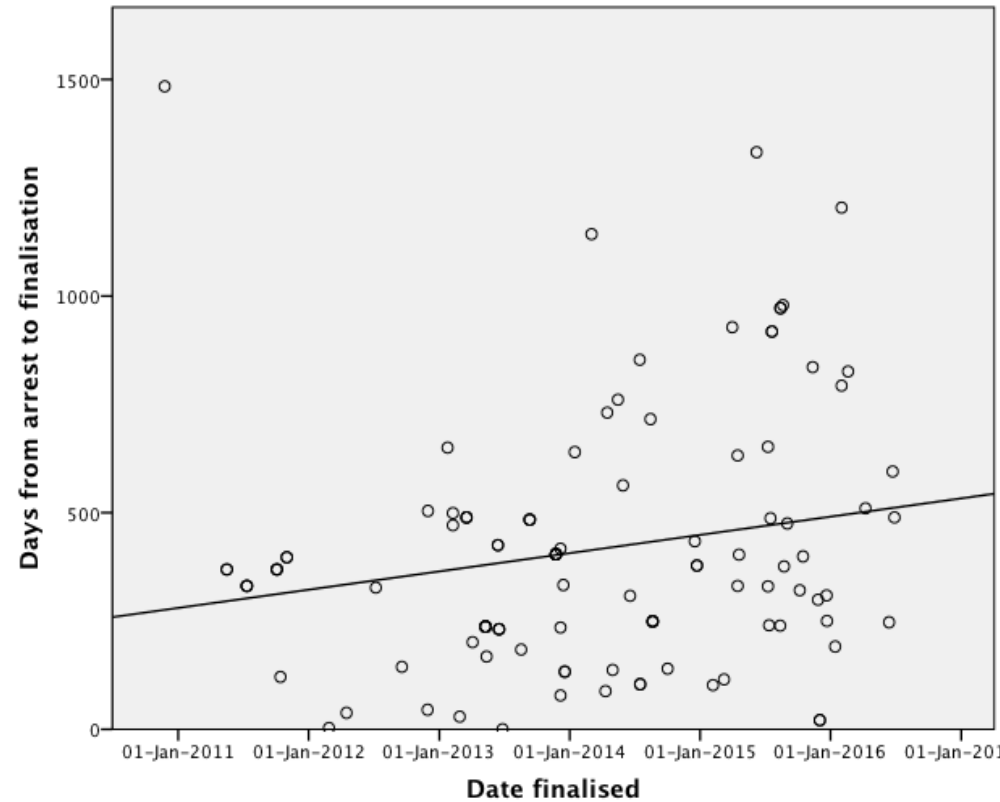
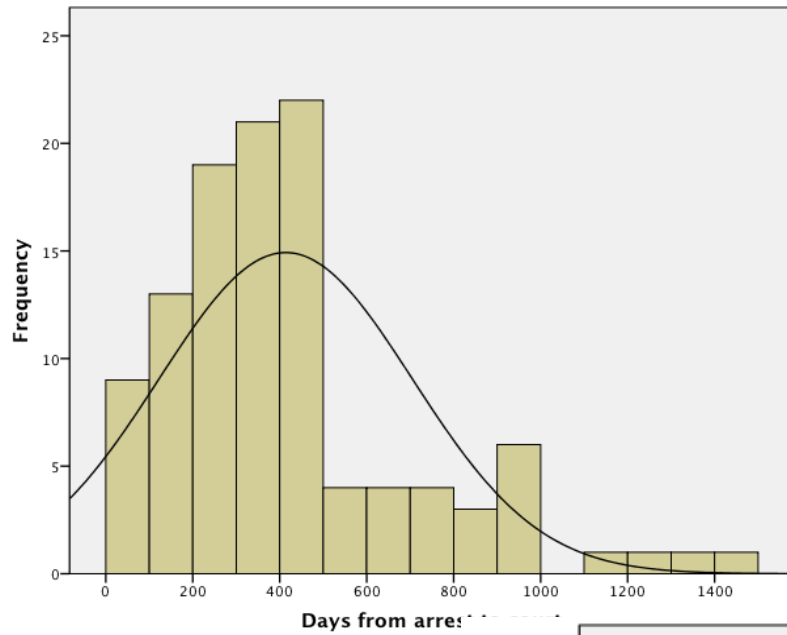




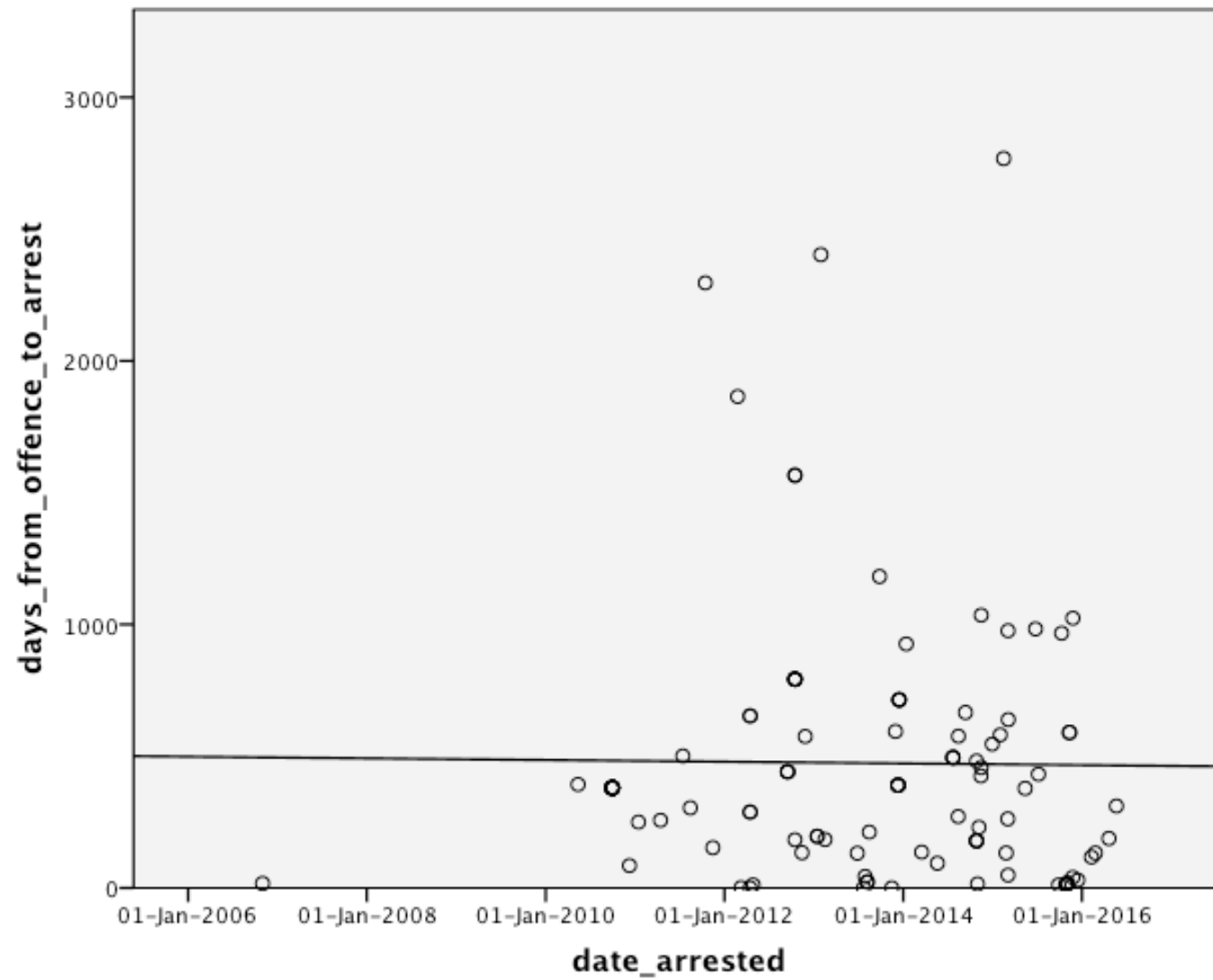
$$r^s = .17, p < .05$$







$$r^s = .21, p < .05$$

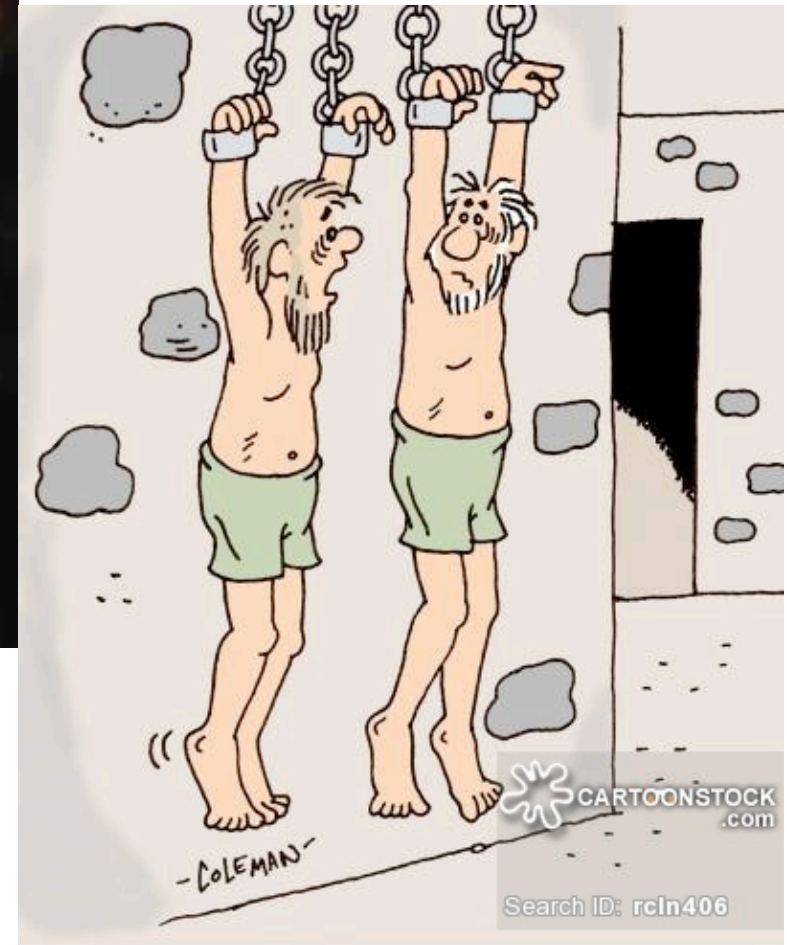


$$r^s = -.05, p = .633$$

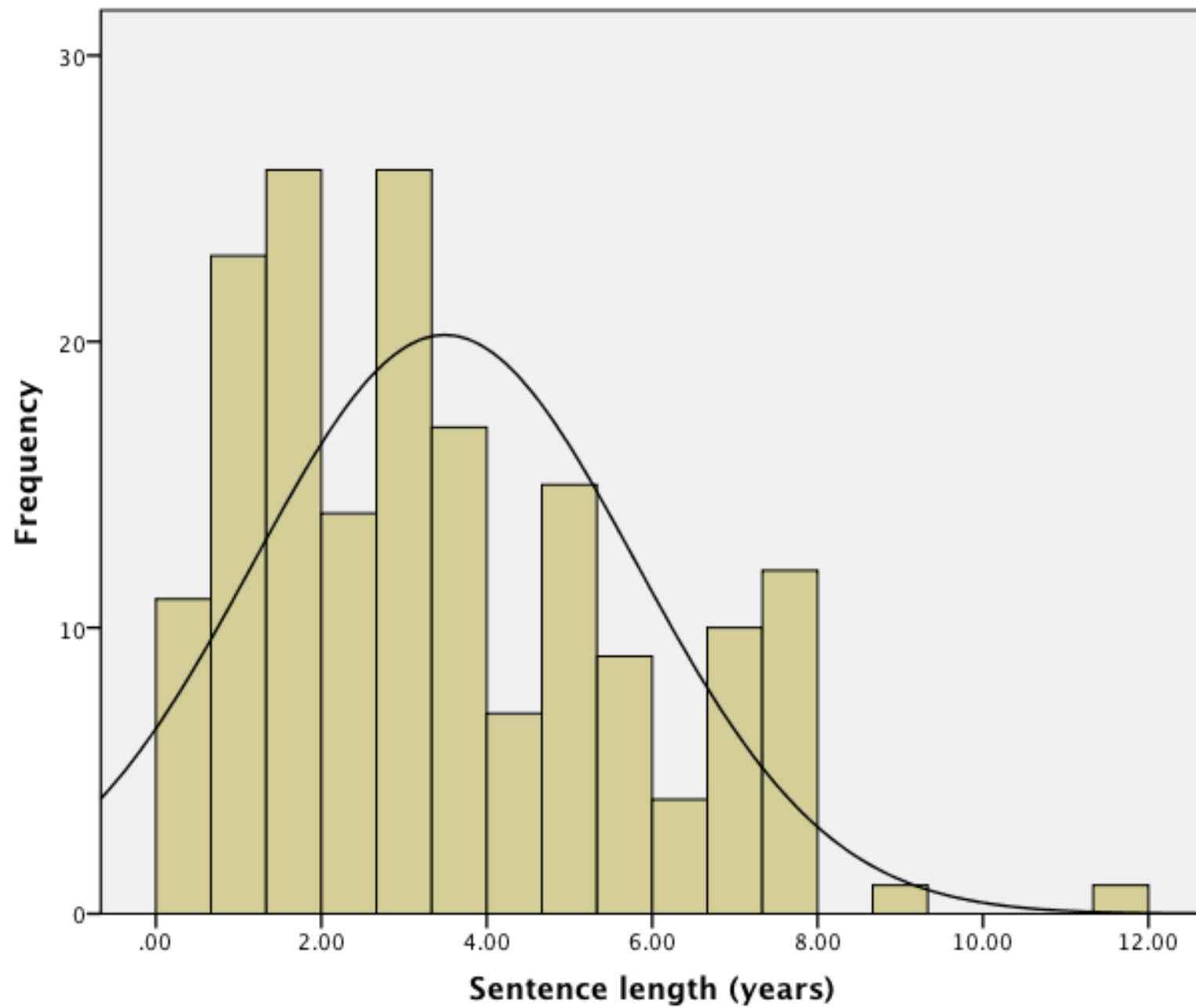


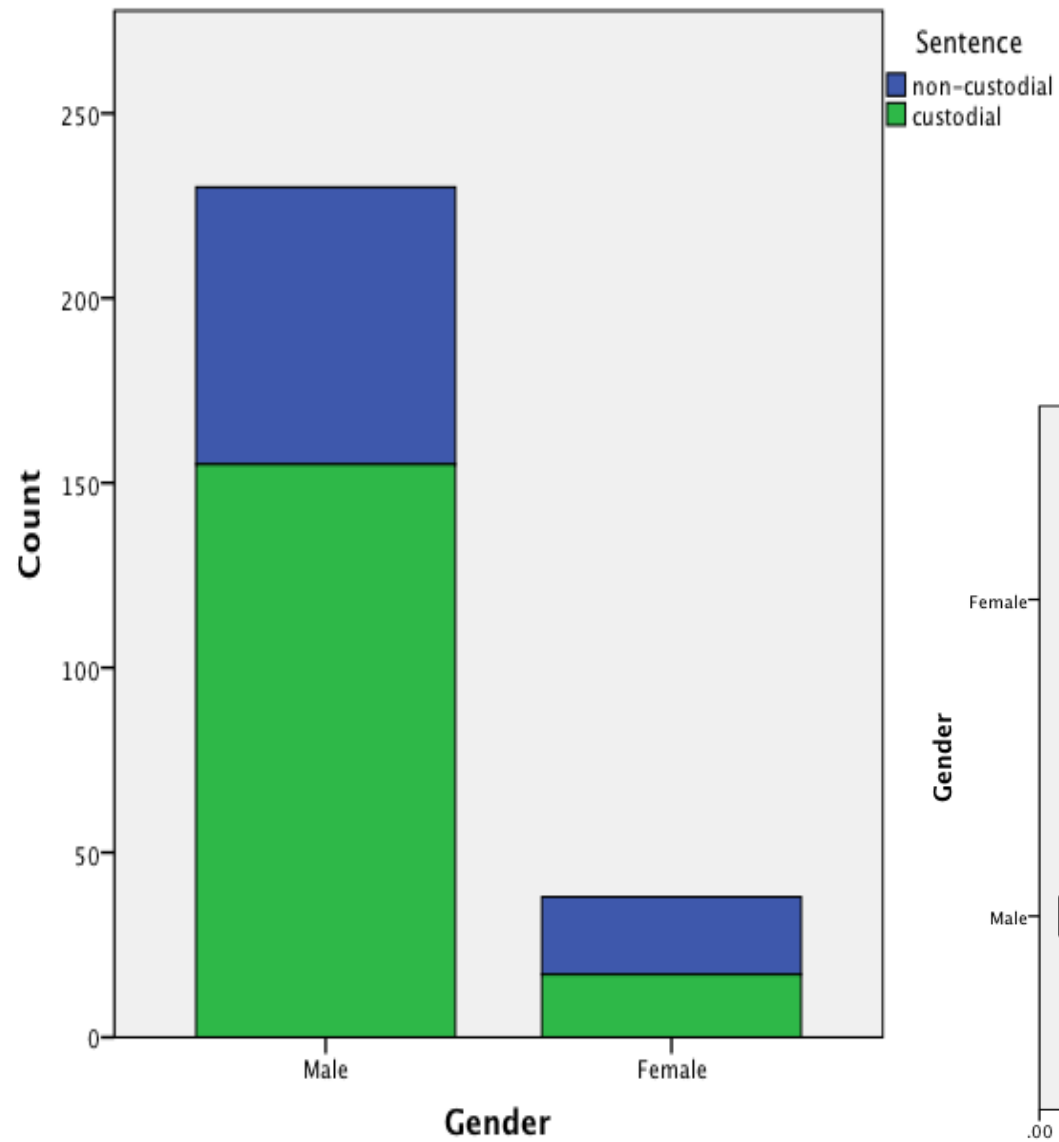
64.2%  
custodial sentence

25.8%  
non-custodial  
sentence

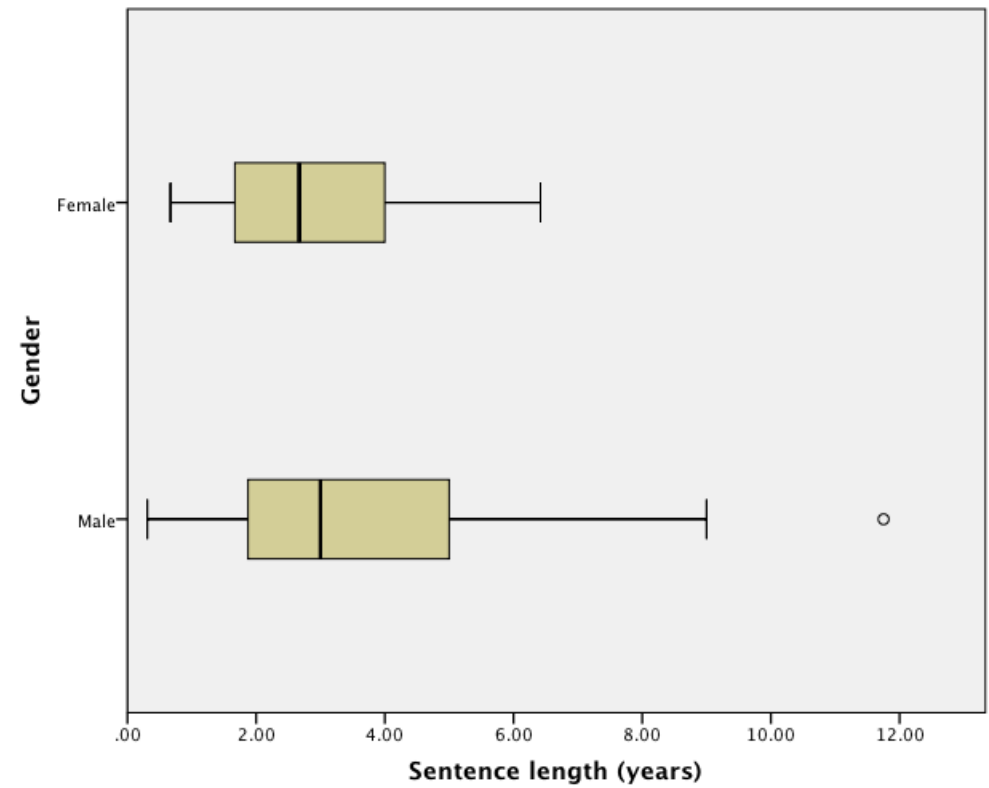


" WHEN THE JUDGE GAVE ME A SUSPENDED  
SENTENCE, I THOUGHT HE MEANT... "

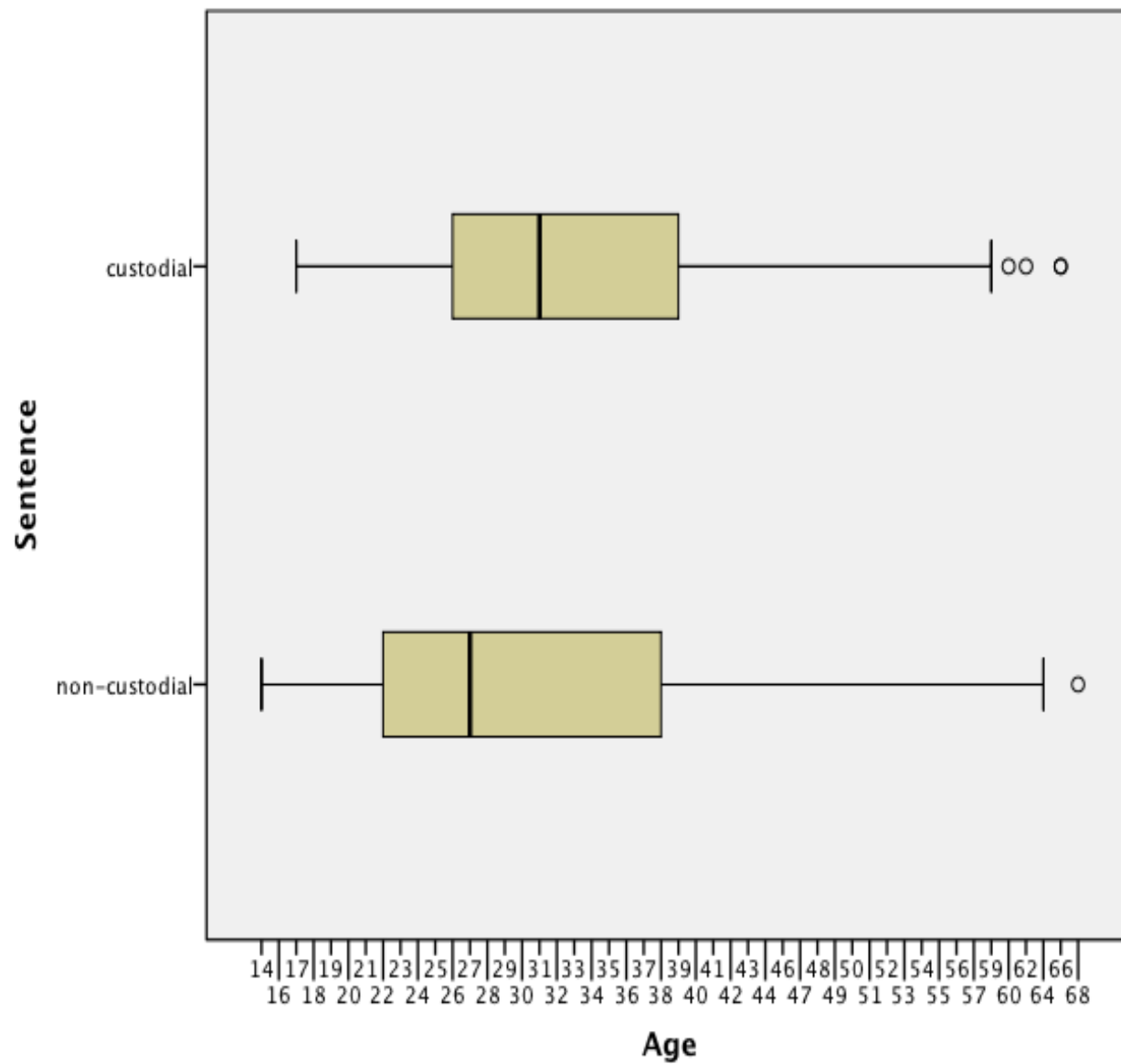




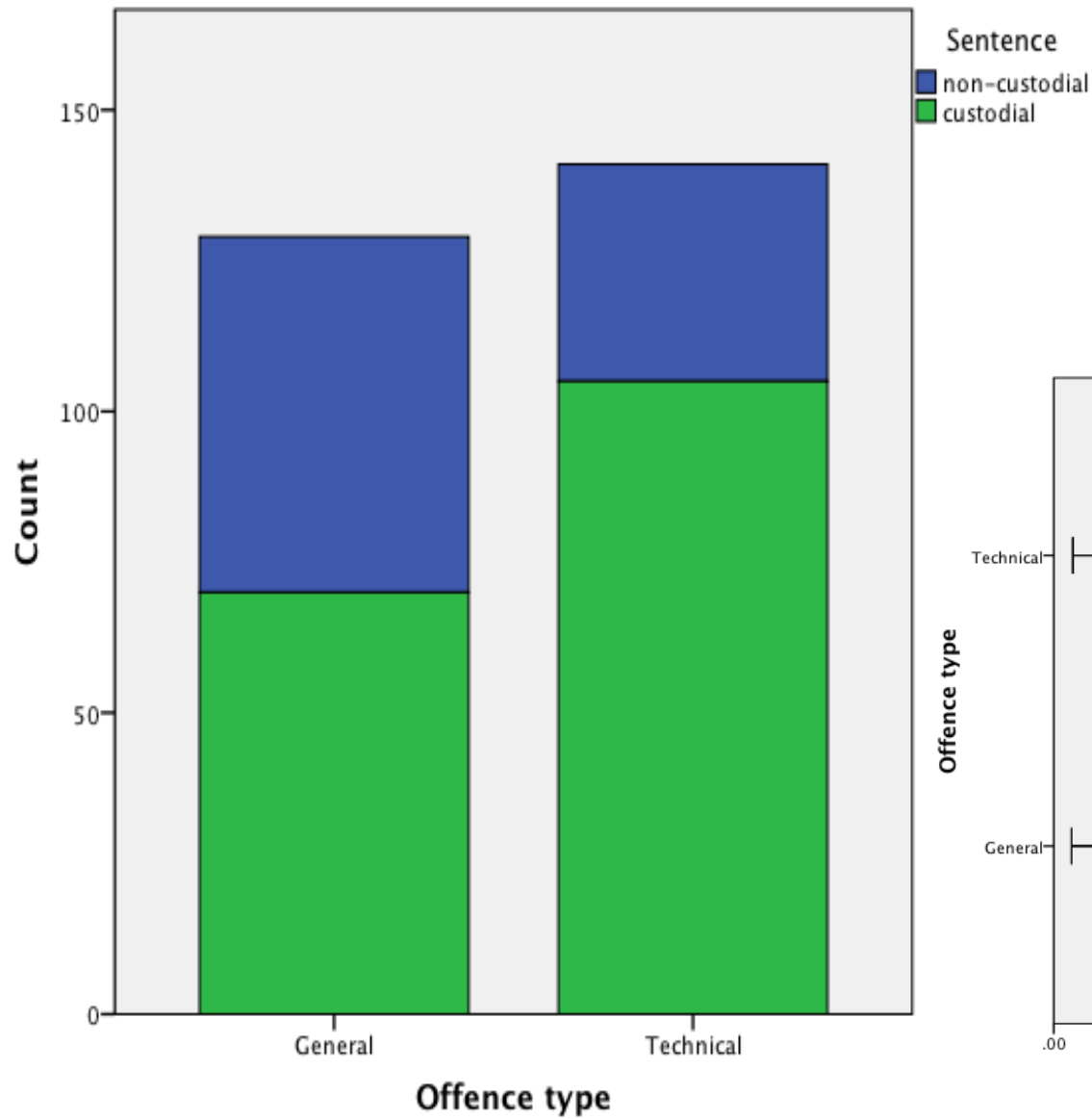
$\chi^2(1, N=268)=6.328, p < .05$



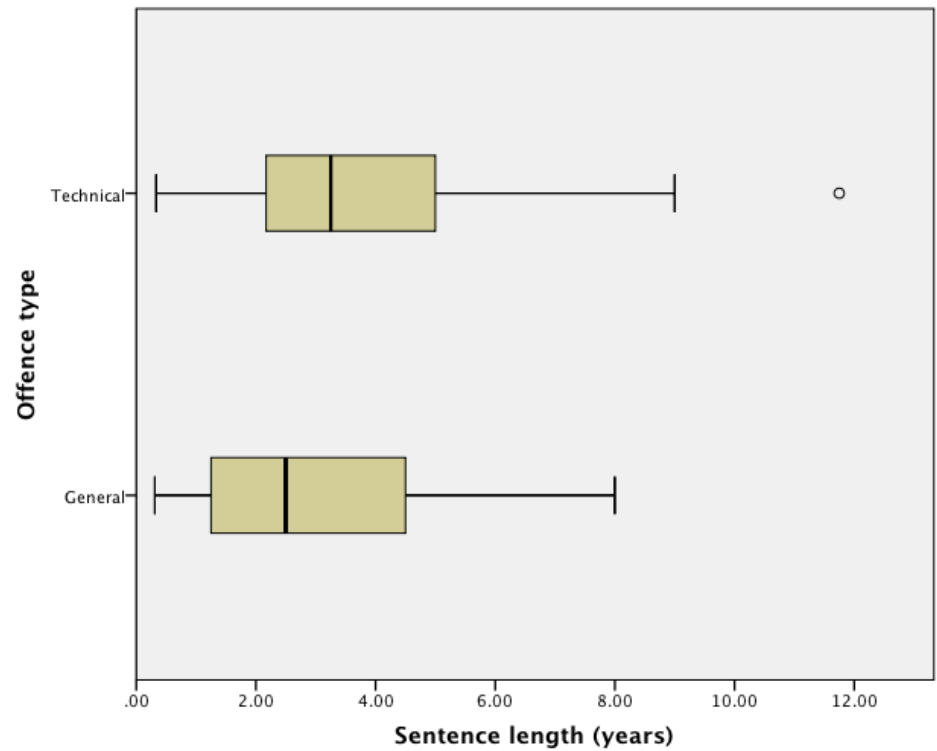
$U = 1152.00, p = .395$



$U = 6357.00, p < .05$



$\chi^2(1, N=270)=11.189, p < .01$



$U = 2988.50, p < .05$

alice.hutchings@cl.cam.ac.uk

@message4bob